

## Introduction

On the following pages are a variety of lead bend options available for TO-220 packages from Linear Technology Corporation. The special adders, flows, and minimums that have been established for these lead bend options are:

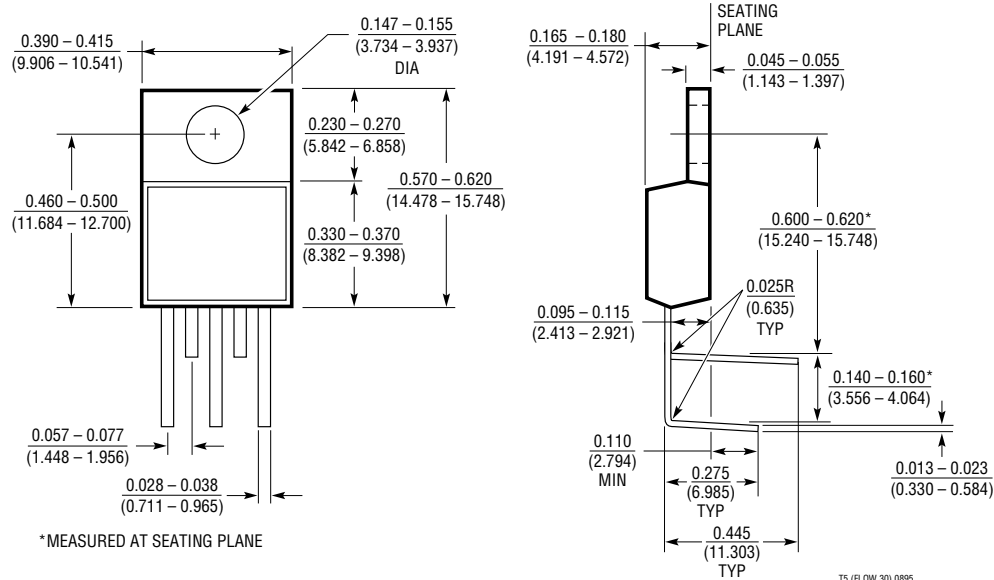
It is important to remember orders for these nonstandard flows require a minimum 90-day notification for cancellation or rescheduling. Also note that special flow orders for U.S. distribution must be approved in advance.

### Flows 30 to 37 Special Lead Bends for TO-220

(Minimum Order: 1,000 units)

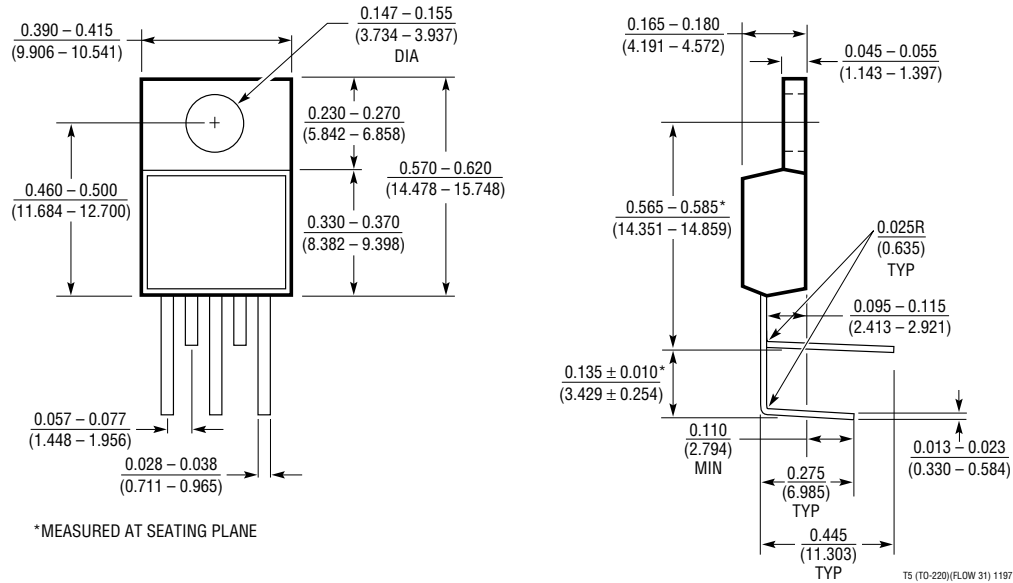
1,000 to 4,999 units	Special lead bends subject to additional charges and order conditions. Contact LTC, Sales/Marketing for more information.
5,000 to 9,999 units	
10,000 to 24,999 units	
> 25,000 units	

**TO-220 5-Lead Package Outline (Flow 30)**  
 (LTC DWG # 05-08-1490)

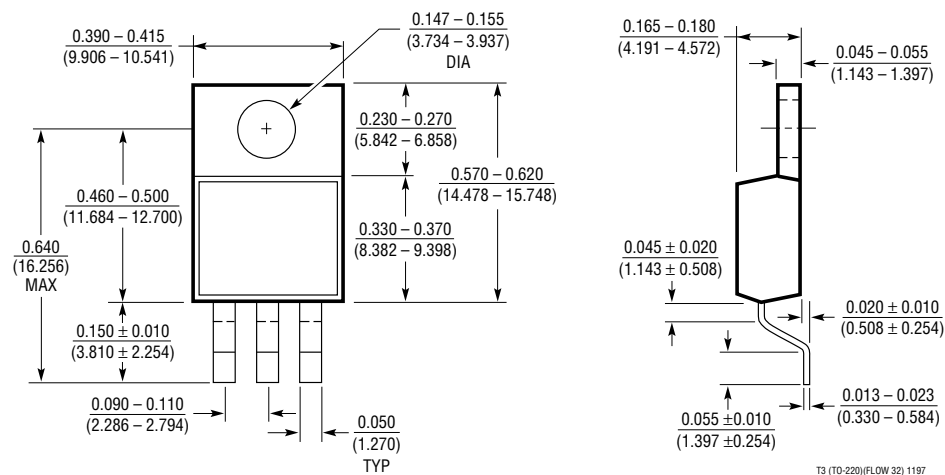


# TO-220 LEAD BEND OPTIONS

**TO-220 5-Lead Package Outline (Flow 31)**  
(LTC DWG # 05-08-1491)

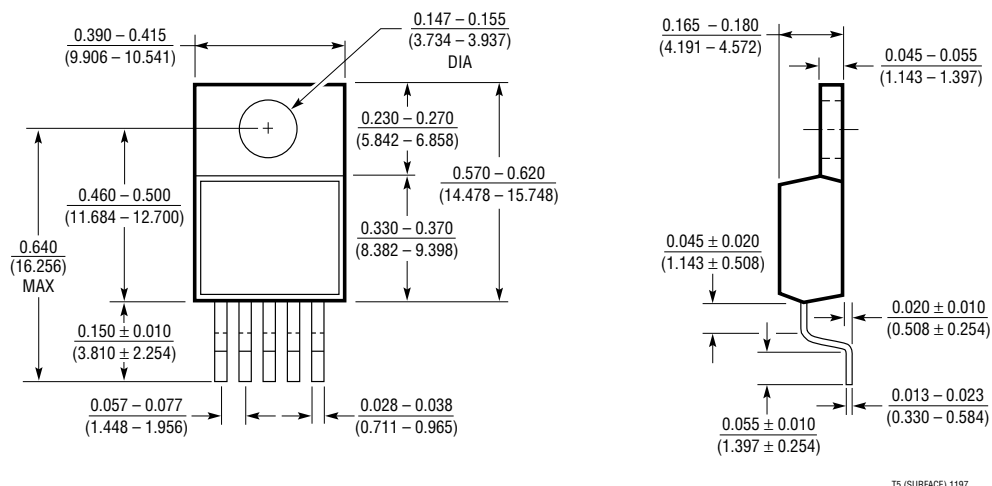


**TO-220 3-Lead Package Outline (Flow 32)**  
(LTC DWG # 05-08-1492)

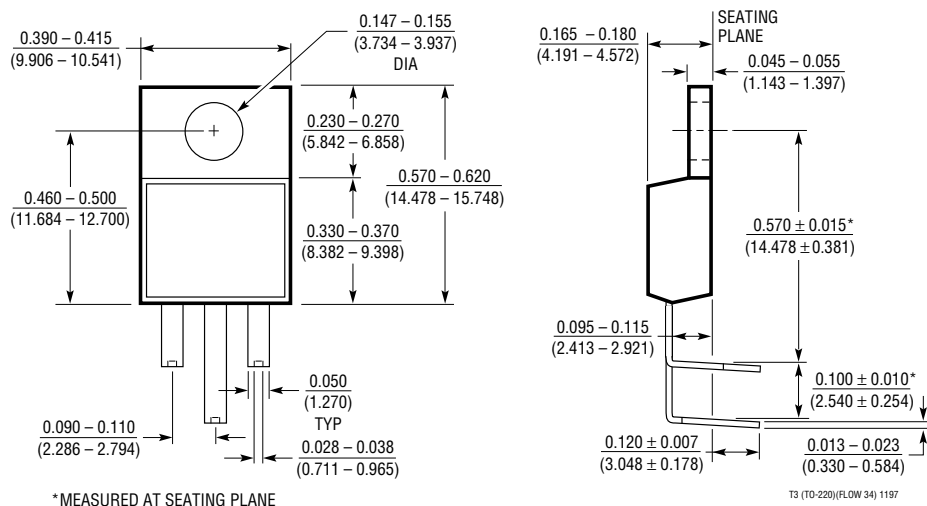


# TO-220 LEAD BEND OPTIONS

**TO-220 5-Lead Package Outline (Flow 33)**  
(LTC DWG # 05-08-1493)

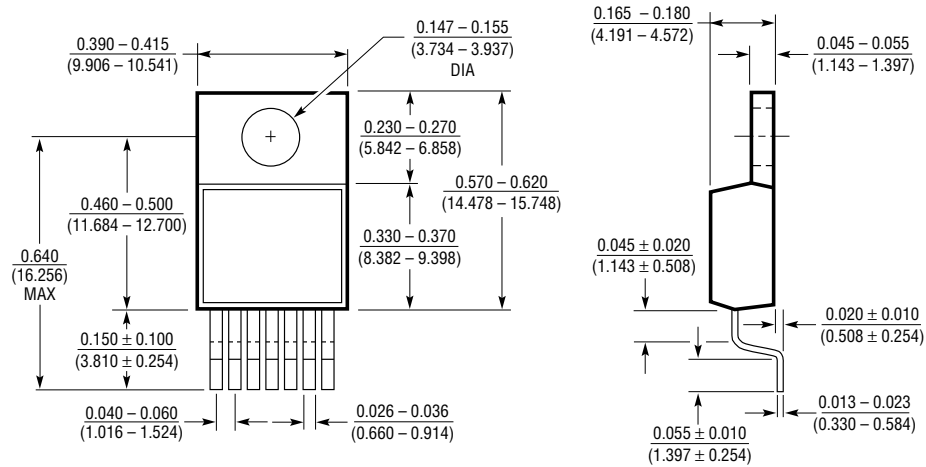


**TO-220 3-Lead Package Outline (Flow 34)**  
(LTC DWG # 05-08-1494)



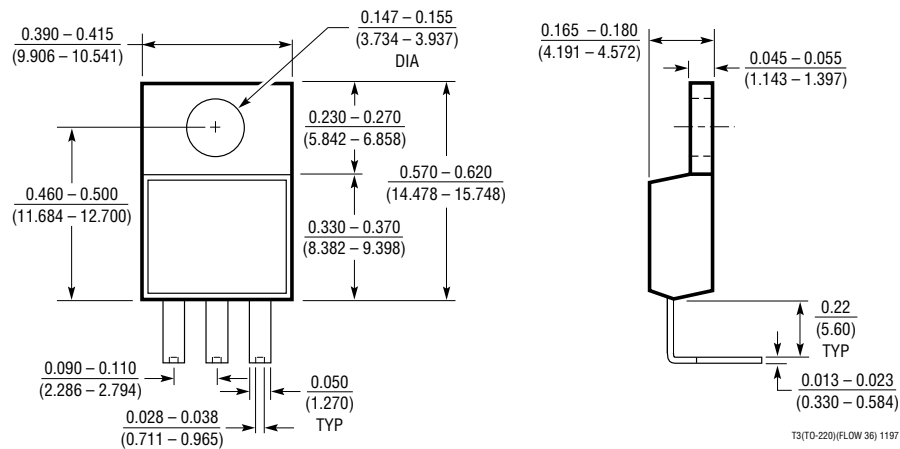
# TO-220 LEAD BEND OPTIONS

**TO-220 7-Lead Package Outline (Flow 35)**  
(LTC DWG # 05-08-1495)



T7 (TO-220)(FLOW 35) 1197

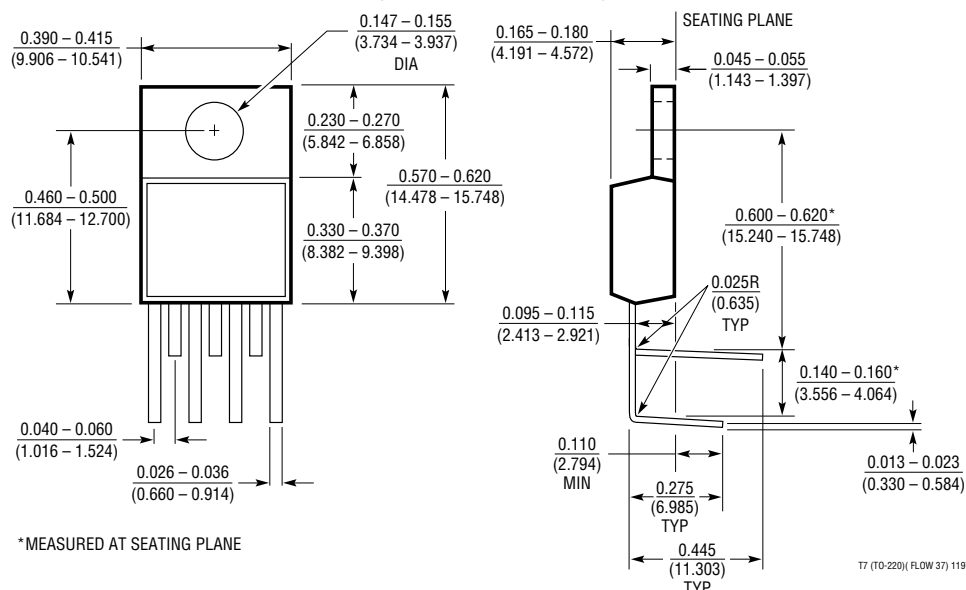
**TO-220 3-Lead Package Outline (Flow 36)**  
(LTC DWG # 05-08-1496)



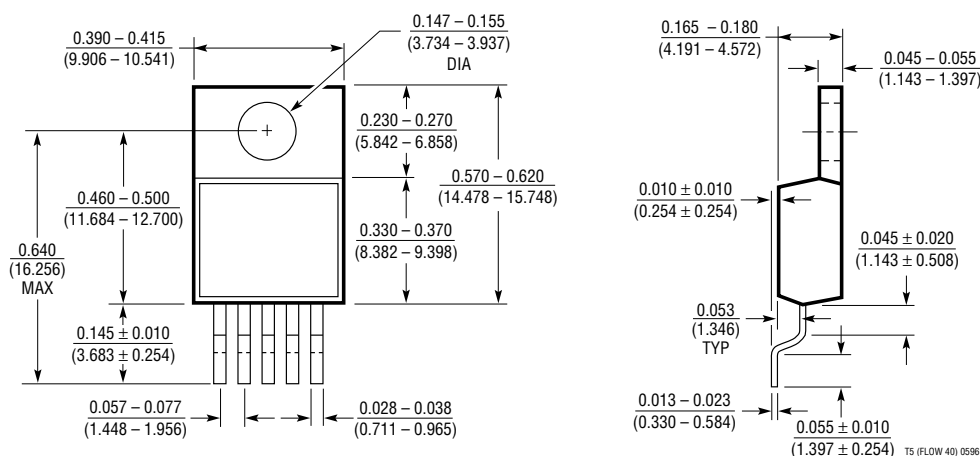
T3(TO-220)(FLOW 36) 1197

# TO-220 LEAD BEND OPTIONS

**T7 7-Lead Package Outline (Flow 37)**  
(LTC DWG # 05-08-1497)



**T7 5-Lead Package Outline (Flow 40)**  
(LTC DWG # 05-08-1480)



**T7 3-Lead Package Outline (Flow 41)**  
(LTC DWG # 05-08-1481)

